

House Haller

Haller Jürgen & Peter Plattner

Mellau, Austria

The vision for this house was a customised building incorporating the impressive panorama at the foot of the Alps with a lifestyle demanding various solutions. The owners' specifications were a house combining living and working areas under one roof.

The entire design of this rather compact house conforms to the location and it was built into the slight incline of the land. As the hill-side of the house is embedded, the east-facing cellar area could be naturally illuminated and used as an office. There is direct access to the office via covered outdoor steps between the main entrance and the carport. Due to its positioning, the building catches the rays of the mountain sun in optimum fashion.

In spite of being highly original and chunky to the point of appearing fortified, the building does not appear out of place in its surroundings. The mid-19th century heritage-protected Bregenzerwald farmhouse nearby is subtly reflected in the windows of the Haller House. Local tradition has been reinterpreted, focussing on aesthetic details without cutting back on functional aspects.

The entrance area is generous and includes a guests' cloakroom. It is also possible to enter the house or the office from the double-space carport. The central staircase divides the ground floor into a living area and a kitchen/dining room. The bedrooms and an extra bathroom for guests are situated on the first floor. The master bathroom has a separate deck, which is ideal

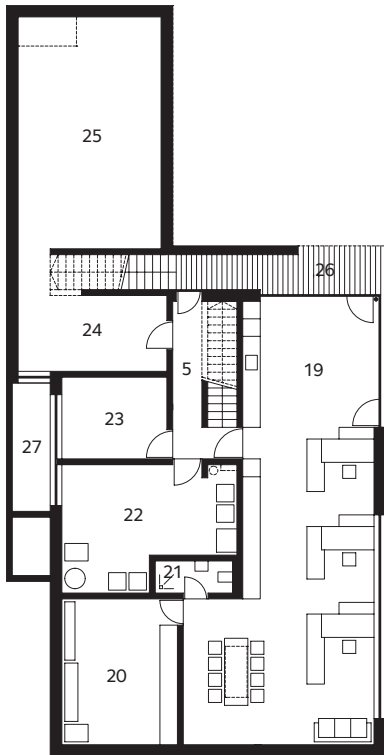
for relaxing and enjoying the magnificent views. The ridge and pitch of the roof give each first floor room an individual character.

The internal walls and ceilings are covered with local silver fir wood, which gives the rooms a cosy feeling despite the large glass windows. The outside façade and the roof have been finished with local silver fir shingles. Here we can see how the architect has made use of a single material, testing its possibilities and constraints. What was once considered confined to traditional buildings appears here as experimental.

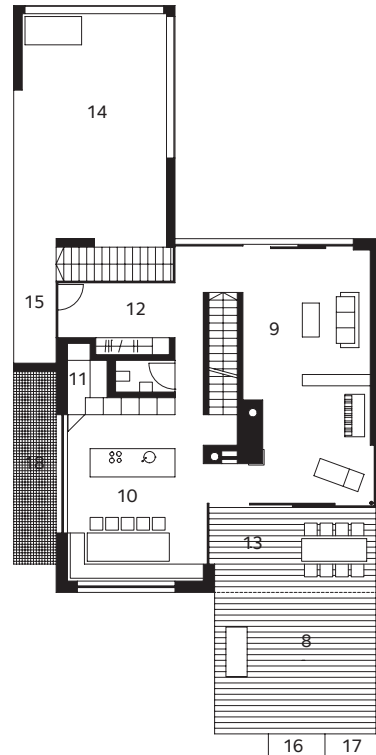
Photography: Albrecht Schnabel



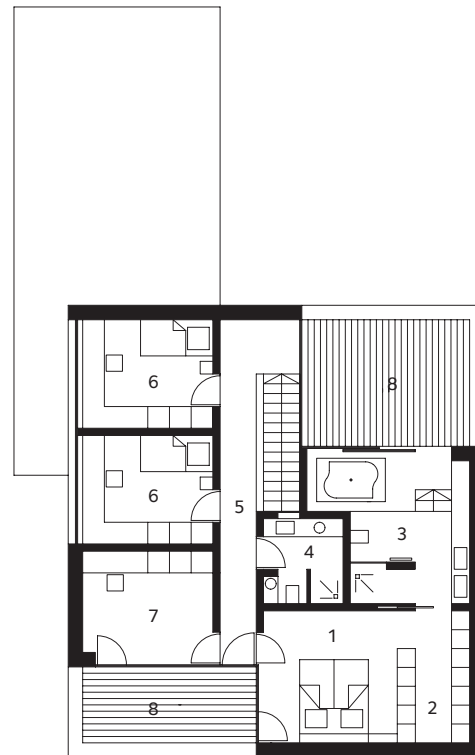




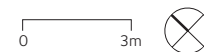
Basement



Ground floor



First floor



- 1 Master bedroom
- 2 Walk-in wardrobe
- 3 Master bathroom
- 4 Children's bathroom
- 5 Corridor
- 6 Child's bedroom
- 7 Bedroom
- 8 Deck
- 9 Living room
- 10 Kitchen/dining room
- 11 Pantry
- 12 Entry/cloakroom
- 13 Covered sitting room
- 14 Carport
- 15 Covered entry
- 16 Well
- 17 Herb garden
- 18 Stainless mesh skylight
- 19 Office
- 20 Store/computer room
- 21 Water closet/shower
- 22 Studio
- 23 Store
- 24 Cellar
- 25 Archive
- 26 Covered office entry
- 27 Skylight

